

# LoRaWAN™ OUTDOOR GATEWAY IX10x1



LoRaWAN™ Outdoor gateway is the gateway for all LoRa® products towards LoRaWAN™ network, collecting real-time data and providing feedback if necessary.

IP67 certified aluminium body makes the Gateway durable and easily mountable. Gateway establishes a secure link to LoRaWAN™ network server over ethernet or cellular connection.

# OVERVIEW

## Universal

Based on NAS IER000 concentrator module, the gateway supports all LoRaWAN™ devices in different applications.

## Robust design

Screw and pole mountable aluminium body.

# APPLICATIONS

## LoRaWAN™ Network

Enables creating LoRaWAN™ network coverage.

# FEATURES

- Long range wireless data transmission
- Class A and C communication support
- Ethernet connection
- Cellular connection\*
- Weatherproof
- Firmware OTA upgradeable
- PoE+
- Internal temperature and humidity sensor
- Hardware watchdog

\* IX1011 only

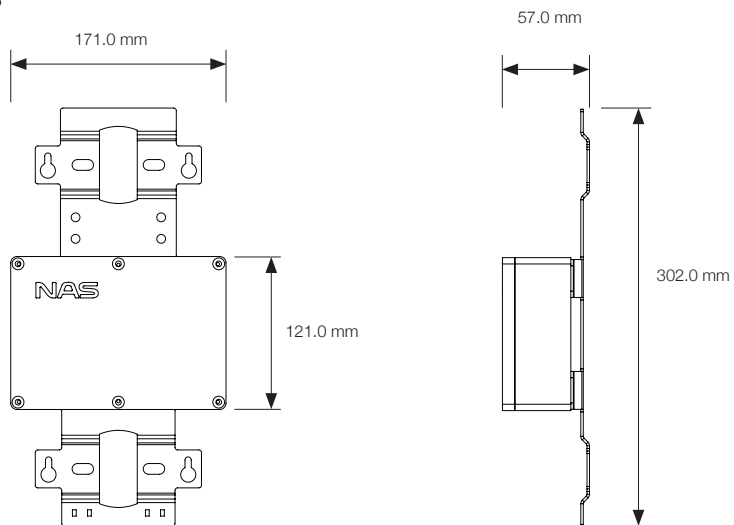
# SPECIFICATIONS

Width:	171.0 mm
Height:	302.0 mm
Depth:	57.0 mm
Weight:	850 g
Operating temperature:	-40°C ... +70°C
Tx power:	up to +18 dBm
Rx sensitivity:	-137 dBm
MAC layer:	LoRaWAN™
Physical layer:	LoRa®
Antenna connection:	N-type
Communication:	Ethernet, Cellular(4G)*
CPU:	Single core Cortex-A5
RAM:	128 MB
Flash:	128 MB NAND
OS:	OpenEmbedded Core / Yocto
Power connection:	Standard 802.3at Mode A PoE+
Power consumption:	<30 W
Body material:	Aluminium, powder coated
IP rating:	IP67

\* IX1011 only.

# DIMENSIONS / PACKAGING

## Dimensions



# ACCESSORIES

## LoRaWAN™ antenna



### Ordering code

868 MHz: RF2-0014

915 MHz: RF2-0029

4G/3G Multiband cellular antenna



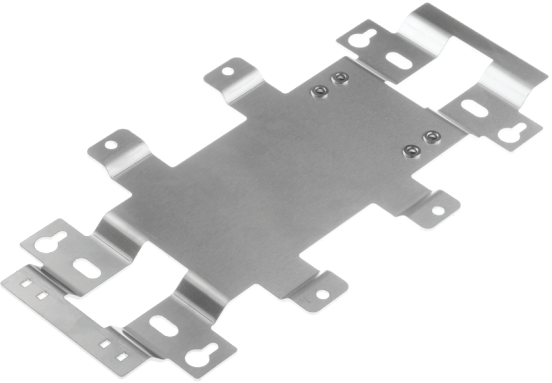
Ordering code  
RF2-0026

802.3af PoE adapter



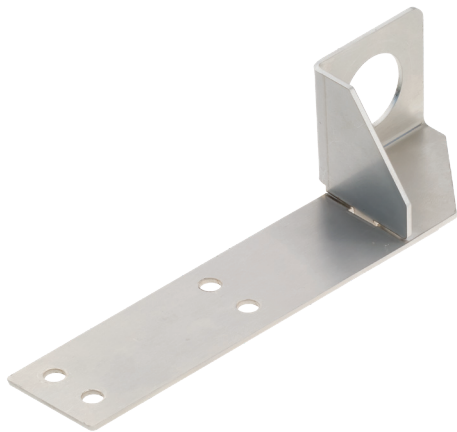
Ordering code  
MSC-0016

Gateway backplate



Ordering code  
LGW-M1

LoRaWAN™ antenna bracket

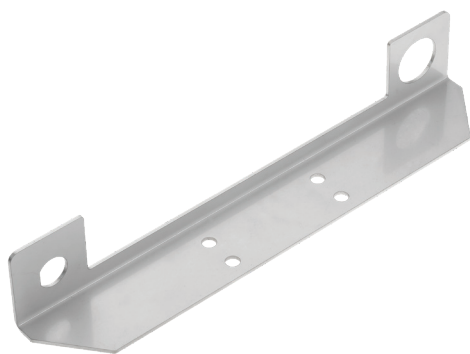


Ordering code

---

LGW-M2

LoRaWAN™ + Cellular antenna bracket



Ordering code

---

LGW-M3

Antenna cable

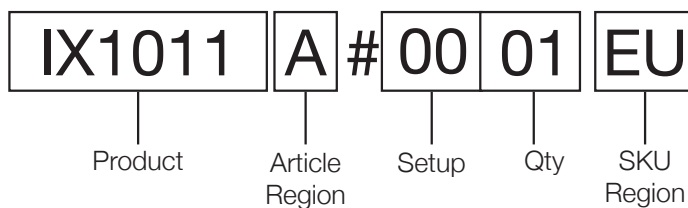


Ordering code

---

40 cm: UEK000N

# ORDERING INFORMATION



Product/SKU	Package qty	Connectivity
IX1001#xx01xx	1	Ethernet
IX1011#xx01xx	1	Cellular

Setup	Setup
IX10x1#0001xx	Plain - includes backplate & PSU
IX10x1#SS01xx	Combo - includes all the needed accessories

Article region	SKU region	LoRaWAN™ band
A	EU	EU868
B	AU	AU915
C	US	US915
D	AS	AS923
I	IN	IN865

# CONTACT INFORMATION

Nordic Automation Systems AS

[www.nasys.no](http://www.nasys.no)

[info@nasys.no](mailto:info@nasys.no)

# REVISION HISTORY

1.0 - First version

1.1 - Added configuration details.

1.2 - Fixed configuration, added accessories.

All content contained herein is subject to change without notice. Nordic Automation Systems reserves the right to change or modify the content at any time.