

SensorLink HIGH-FLOW INLINE PNEUMATIC SENSOR IM3030



SensorLink high-flow inline pneumatic sensor is a wireless device that makes your air supply visible to NAS Analytics Platform.

Sensor is mounted inline within existing compressed air line.

Sensor body is made of 6000-series aluminium with reinforced polyamide covering for electronics protection.

Analytics Platform monitors trigger time, consumption data, maintenance cycles and enables to set up reports based on that information.

OVERVIEW

Efficient

Sensor has built-in batteries with no maintenance needed during product lifetime.

Intelligent

Real-time usage data is gathered wirelessly and processed automatically. Data is accessible on any PC or smartphone connected to the internet.

Robust design

Small aluminium body makes the sensor light yet durable, having no interference on working conditions.

Plug and play

Easily mountable with automatic discovery. No additional software needed.

FEATURES

- Wireless data transmission
- Lifetime up to 2 years
- Air flow measurement 240-2600 l/min
- Trigger time measurement
- Ambient temperature measurement
- Sensor internal data recording for off-site usage
- Flowrate 2300l/min @ 0,6 bar drop
- Pressure measuring range 0-10 bar
- Factory calibrated
- Firmware OTA upgradable
- Various thread types available

APPLICATIONS

Lifecycle management

Detailed overview of working cycles with exact trigger time, consumption details and notifications of upcoming maintenance deadlines.

Air supply monitoring

Overview of consumption and locating leakages.
Pressure monitoring.

Pressure monitoring

SPECIFICATIONS

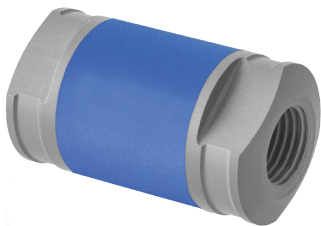
Length :	62.0 mm
Diameter:	34.6 mm
Weight:	60 g
Operating temperature:	-20°C ... +60°C
Maximum trigger flow:	300 l/min, 6 bar
Pressure measuring range:	0-10 bar
Pressure accuracy:	200 mbar
RF range:	up to 30 m*
Battery lifetime:	up to 2 years*
Nominal flow diameter:	7.2 mm
Air flow:	2300 l/min**
Max. working pressure:	10 bar (145 PSI)
Body material:	6000-series aluminium + reinforced polyamide
Thread type:	3/8" BSP / G 3/8" NPT
Cleaning recommendation:	Alcohol-based liquids and soft tissue
Communication:	2.4 GHz NAS SensorLink 3 protocol
Installation tool :	27mm wrench***

* Battery lifetime and signal range are largely dependent on the location and usage. Low temperature reduces battery life. Reinforced and metal walls block reception. Industry average is shown on datasheet.

** Flow capacity is measured at 6 bar (87 PSI) inlet pressure, and pressure drop at 0.6 bar (8.7 PSI).

*** Not included.

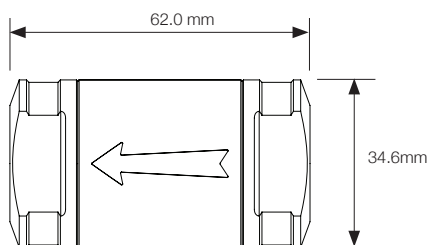
THREADING TYPES



	3/8" BSP / G	3/8" NPT
6-series Aluminium with pressure sensor	IM3030AP	IM3030BP

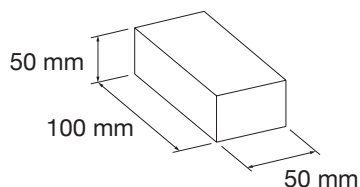
DIMENSIONS / PACKAGING

Dimensions



Packaging

1 pcs box



ORDERING INFORMATION

Article / SKU	Package qty	Material	Pressure sensor	Thread
IM3030AP#0001EC	1	Aluminium	•	3/8" BSP / G
IM3030BP#0001EC	1	Aluminium	•	3/8" NPT

CONTACT INFORMATION

Nordic Automation Systems AS

www.nasys.no

info@nasys.no